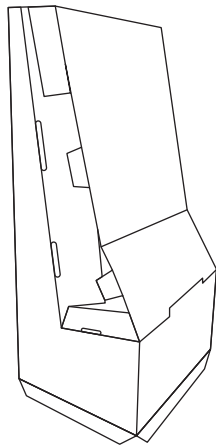




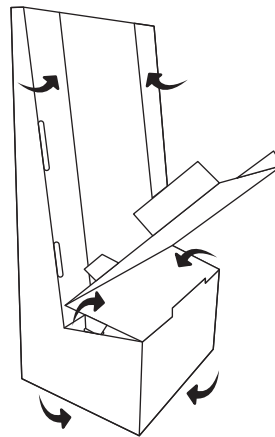
Scan for an assembly video.

1.



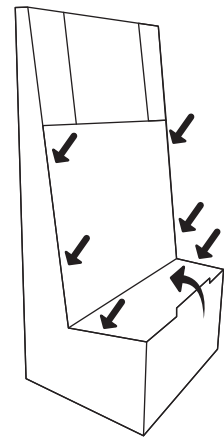
Unfold BASE and stand up.

2.



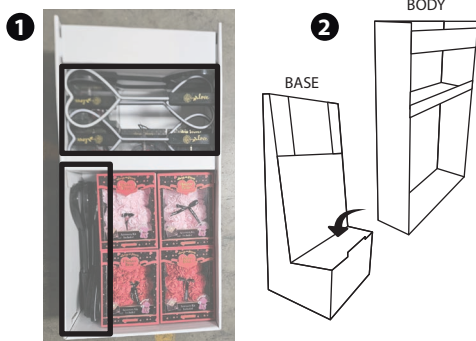
Fold panels at the bottom of BASE inward.
Fold 2 sets of panels on front of base inward in preparation for STEP 3.

3.



Insert tabs 2A, 2B, 2C into corresponding 2A, 2B, 2C slots on front of base.
(Refer to the diagrams on the base)

4.



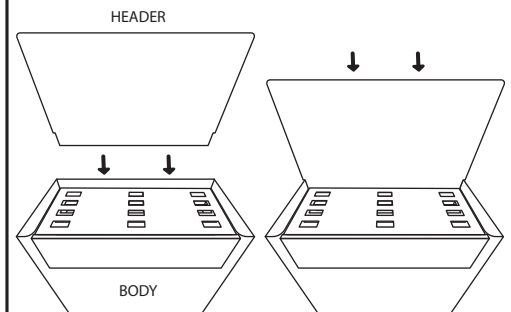
Remove 12 light up heart wands from the BODY.
Place the BODY onto the BASE.

5.



Position the Flower Bears with Accessories in the center.

6.



Position the HEADER on top of the display, behind the light up heart inserts.

7.



Place the 12 light-up heart wands at the top of the display in their designated spots, with the Love Rose facing forward.

COMPLETED



Any questions or issues with this display, please call us at (888) 727-2476 or email us at support@in-motion-design.com.