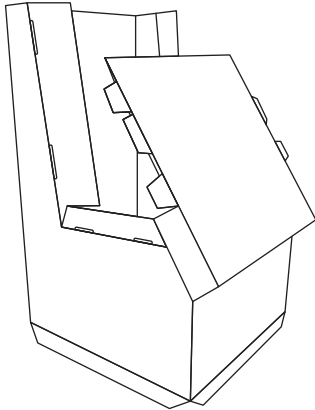




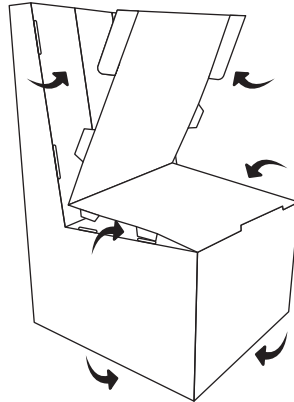
Scan for an assembly video.

1.



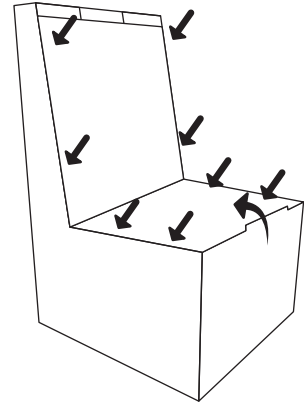
Unfold BASE and stand up.

2.



Fold panels at the bottom of BASE inward.  
 Fold 2 sets of panels on front of base inward in preparation for STEP 3.

3.



Insert tabs 2A, 2B, 2C, 2D into corresponding 2A, 2B, 2C, 2D slots on front of base.  
 (Refer to the diagrams on the base)

4.



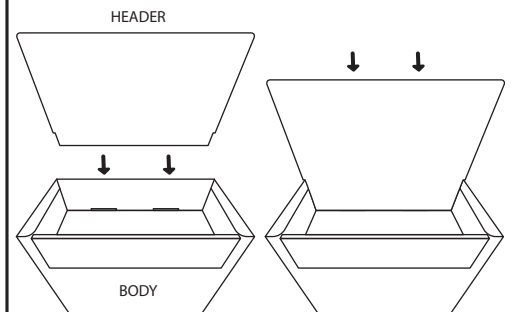
Remove 3 white inserts from the display BODY.  
 Place the BODY onto the BASE.

5.



Adjust all the Forever Roses to the middle, centering them on the display shelves.

6.



Position the HEADER on top of the display, behind the plushies.

**COMPLETED**



Any questions or issues with this display, please call us at (888) 727-2476  
 or email us at [support@in-motion-design.com](mailto:support@in-motion-design.com).